



Full line of high performance wood deck fasteners



Coarse Thread - TRI-SEAL COATED

- Exterior wood screw for outdoor applications including decks, treated wood, patios and fencing.
- TRI-SEAL coated formulated for ACQ treated lumber!



305 Stainless Steel

- 305 stainless steel coarse thread deck screw, #2 square drive, type 17 point.
- Exterior wood screw for outdoor applications including decks, treated wood, patios and fencing applications that require a high degree of corrosion resistance.
- For best possible corrosion resistance in ACQ Treated Lumber!
- Type 17 point provides superior penetration through the hardest of woods.
- 305 stainless steel provides maximum strength with superior corrosion protection.

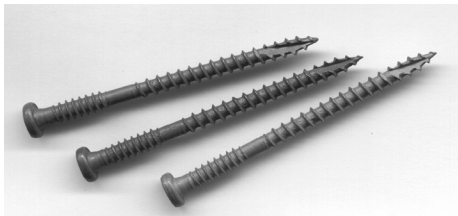
SIZES

Carbon Steel

Size	Carton Quantity	Drive Style	Carton Weight (lbs.)
6 x 1"	10M	+	32
6 x 1-1/4"	8M	+ / □	30
6 x 1-5/8"	5M	+ / □	24
6 x 2"	3.5M	+ / □	21
8 x 2-1/2"	2.5M	+ / □	24
8 x 3"	2M	+ / □	24
10 x 3-1/2"	1.5M	+ / □	28
10 x 4"	1M	+ / □	24
10 x 5"	1M	+	27
10 x 6"	1M	+	30

305 Stainless Steel

Size	Carton Quantity	Carton Weight (lbs.)
8 x 1-1/4"	5M	28
8 x 1-5/8"	4M	29
8 x 2"	3M	25
10 x 2-1/2"	2M	25
10 x 3"	1.5M	23
10 x 3-1/2"	1M	18

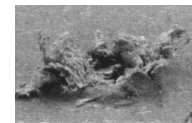


Composite Deck Screws - COATED

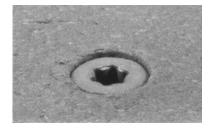
- For flush mounting of the fasteners without mushrooming!

SIZE: #10 x 2-3/4"

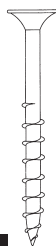
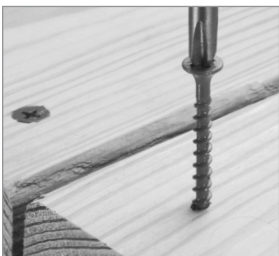
Ordinary Bugle Head



Seats Flush



Dec-King Exterior Wood Screws



Product Features

Coated with Climacoat® for maximum resistance to corrosion, staining and streaking inside the lumber and on the deck.

Approved for use is ACQ treated lumber.

Outperforms all zinc based platings in treated wood.

Pullout strength is superior over nails.

Eliminates wood splitting, nail pops, hammer marks and bent nails.

Now available in both #2 Phillips and #2 Square Drive.

Selector Guide

Description	Head Style	Part Number	Applications
6 x 1-1/4"	#2 Phillips Bugle	2176500	1" x 4" or 1" x 6" Base Trim; Lattice
6 x 1-5/8"	#2 Phillips Bugle	2136500	1" x 4" or 1" x 6" Base Trim; Ballisters; Lattice
7 x 2"	#2 Phillips Bugle	2138500	5/4" x 4" or 5/4" x 6" Radius Edged Decking; 1" x 4" or 1" x 6" Base Trim; Ballisters; Lattice
8 x 2-1/2"	#2 Phillips Bugle	2140500	5/4" x 4" or 5/4" x 6" Radius Edged Decking Decking 2" x 4" or 2" x 6" Rail Cap or Base Trim 2" x 6" or 2" x 8"
8 x 3"	#2 Phillips Bugle	2141500	2" x 4" or 2" x 6" Decking 2" x 6" or 2" x 8" Rail Cap or Base Trim
10 x 3-1/2"	#2 Phillips Bugle	2142500	2" x 4" or 2" x 6" Decking 2" x 6" or 2" x 8" Rail Cap or Base Trim

Performance Data

Corrosion Resistance

Kesternich Results (DIN 50018, 2.0L)

- 25 Cycles - 10% or less red rust

Salt Spray Results (ASTM B117)

- 1000 hours - 10% or less red rust

Pullout Values (average pounds ultimate) Embedment 2" x 4" Stud Grade S.Y. Pine

Description	1/2"	3/4"	1"	1-1/4"
6 x 1-1/4"	182	329	422	-
6 x 1-5/8"	182	329	422	620
7 x 2"	189	318	440	630
8 x 2-1/2"	186	290	502	630
8 x 3"	186	290	502	645
10 x 3-1/2"	241	386	522	721

Note: The values listed are ultimate averages achieved under laboratory conditions. An appropriate safety factor should be applied in these values to achieve a design value.