

BRACER[®] LITE

BRACING WASHER

BRACER[®] LITE HILLSIDE STYLE WASHER



Improve the performance over standard hillside washers...Specify **BRACER[®] LITE**

BRACER[®] LITE increases load capacities and performance compared to ordinary hillside washers. Included with BRACER[®] LITE is our STRESS-LOK[®] clamping washer that increases the load carrying capacities and reduces slippage of the rod, keeping the bracing tight!

Available in 3 sizes!



See why **BRACER[®] LITE** provides better performance compared to standard hillside washers.



STRESS-LOK[®] WASHER

Our patented STRESS-LOK[®] clamping washer distributes the load across more area than a standard flat washer.

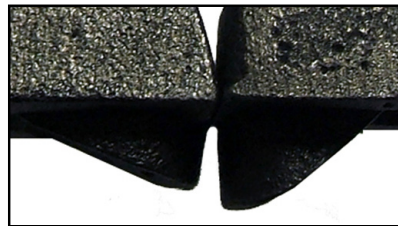
Tests conclude that this design increases the load capacity of the bracing assembly, keeping the rod from slipping across the surface which can cause loosening of the nut.



ANTI SLIP SERRATIONS

Our patented serrations reduce rod slippage, which keep the bracing from becoming loose.

Independent tests confirm that BRACER[®] LITE produced from ductile iron produces higher load capacities and better ductility. Hillside washers produced from Class 30 cast iron had unpredictable load capacities.



LARGER NIPPLE

Designed to engage the web slot deeper, making installation easy and producing greater loads in applications requiring steep rod angles.



INDEPENDENT TESTS

TFC is the only supplier of hillside style washers that can supply independent tests to confirm the load capacities.

Tests conclude that the patented BRACER[®] LITE with STRESS-LOK[®] were found to be superior to off the shelf hillside washers, and can carry higher loads.

TECHNICAL INFORMATION

Material: Ductile Iron ASTM 536-84 Grade 64-45-12

Finish: Plain

LOAD RESULTS

Independent tests were conducted at Mississippi State University under the direction of Dr. Ralph Sinno Ph.D. P.E. in accordance to test sponsored by the MBMA and published as part of the Journal of Structural Engineering Vol 119, No 11, November 1993, "X-Bracing Anchorage Connection" paper.

Comments by Dr. Ralph Sinno:

"Triangle Fasteners "Bracer Lite" hillside anchors having ridges, serration, on the curvature of the hillside washer with companion Stress-Lok washers were found to be superior to the standard off-the-shelf market available ductile steel hillside washers. They carry higher loads with no failure in any tests to neither the hillside anchor, "Bracer Lite", nor the Stress-Lok washers."

WEB	BRACER LITE SIZE	LOAD (Ultimate)
1/8"	1/2"	⁽¹⁾ 10,750 lbs.
1/8"	5/8"	⁽¹⁾ 15,850 lbs.
3/16"	3/4"	⁽²⁾ 23,500 lbs.
1/4"	3/4"	⁽²⁾ 26,600 lbs.

Rod Angle: ⁽¹⁾ 30° / ⁽²⁾ 45°

Failure Mode

Rod tensile failure.

