



ZAMAC DRIVE PIN TYPE ANCHORS

ZAMAC™ Drive Pin Anchor



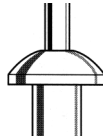
The TFC ZAMAC™ is a tamper-proof nail drive anchor which has a body formed from Zamac alloy. Nails are available in carbon or stainless steel. The anchor can be used in concrete, block, brick or stone. This anchor is not recommended for applications overhead.

Base Material: Concrete, Block, Brick, Stone

Size Range: 3/16" x 7/8" to 1/4" x 2"

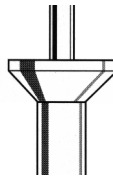
Anchor Material: Zamac Alloy with Carbon or Stainless Steel Drive Pin

Mushroom Head Zamac Nailin® Carbon Steel Nail



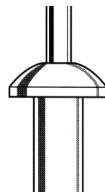
Size	Drill Dia.	Std. Box	Std. Ctn.
1/4" x 3/4"	1/4"	100	500
1/4" x 1"	1/4"	100	500
1/4" x 1-1/4"	1/4"	100	500
1/4" x 1-1/2"	1/4"	100	500
1/4" x 2"	1/4"	100	500

Flat Head Zamac Nailin® Carbon Steel Nail



Size	Drill Dia.	Std. Box	Std. Ctn.
1/4" x 1-1/2"	1/4"	100	500
1/4" x 2"	1/4"	100	500

Mushroom Head Zamac Nailin® Type 304 Stainless Steel Nail



Size	Drill Dia.	Std. Box	Std. Ctn.
1/4" x 1"	1/4"	100	500
1/4" x 1-1/4"	1/4"	100	500
1/4" x 1-1/2"	1/4"	100	500
1/4" x 2"	1/4"	100	500

Performance Data

The following ultimate load capacities are based on tests conducted according to ASTM Standard E 488.

Anchor Size	Embed. Depth	2,000 PSI Concrete		4,000 PSI Concrete		6,000 PSI Concrete	
		Tension (lbs)	Shear (lbs.)	Tension (lbs)	Shear (lbs.)	Tension (lbs)	Shear (lbs.)
1/4"	5/8"	480	1230	600	1500	640	1500
1/4"	3/4"	580	1230	720	1500	760	1500
1/4"	7/8"	770	1350	820	1500	890	1500
1/4"	1 1/8"	890	1400	960	1500	1060	1500
1/4"	1 3/8"	980	1400	1150	1500	1230	1500
1/4"	1 7/8"	1150	1400	1300	1500	1365	1500

Ultimate Load Capacities - C-90 Hollow Block and Red Solid Block

Anchor Size	Embed. Depth	C-90 Hollow Block		Red Solid Block	
		Tension (lbs)	Shear (lbs.)	Tension (lbs)	Shear (lbs.)
3/16"	3/4"	270	860	460	920
1/4"	5/8"	360	1040	570	1250
1/4"	3/4"	480	1160	790	1400
1/4"	1"	590	1320	820	1400
1/4"	1 3/8"	800	1320	950	1400
1/4"	1 1/2"	965	1320	1015	1400